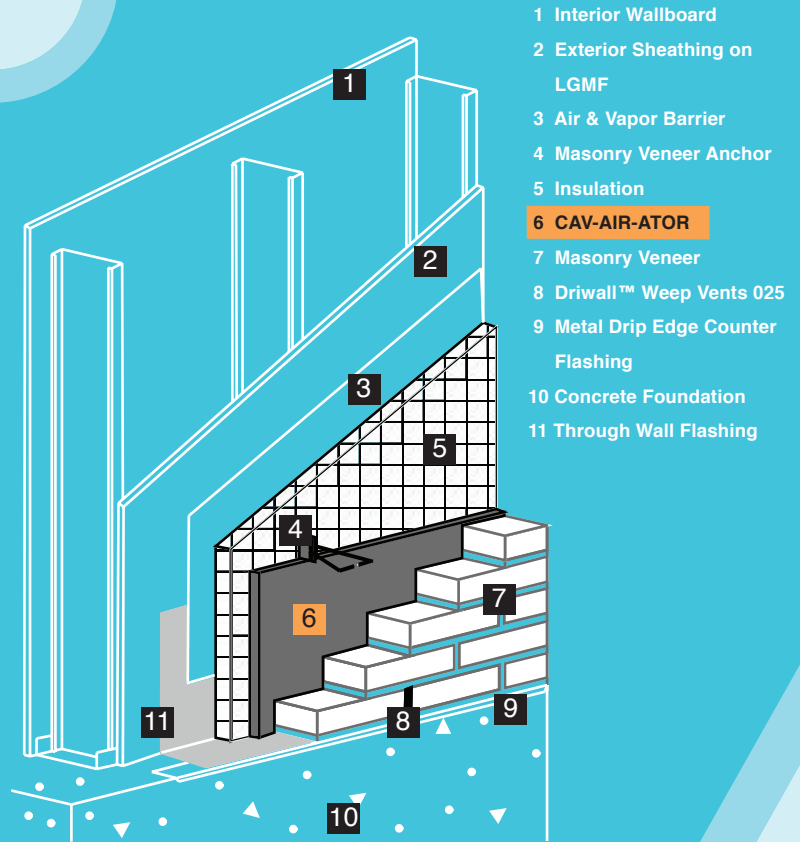




## CAV-AIR-ATOR®

The CAV-AIR-ATOR is a full wall drainage and ventilation mat for full brick or stone masonry walls. It prevents mortar from entering the cavity, clinging to wall ties, or blocking weep holes. The innovative design of the CAV-AIR-ATOR allows it to be extremely light and flexible so that it can easily rest on top of the brick ties.

Masonry structures are built to last for up to 100 years. However, excess moisture can affect the durability and longevity of the structure. A masonry wall needs an air space free of mortar and other debris to properly drain and ventilate. If moisture builds up and the wall is unable to dry, problems such as cracking, deterioration, and efflorescence may occur. The CAV-AIR-ATOR protects against moisture issues in masonry applications by providing an unobstructed air space for drainage and ventilation.



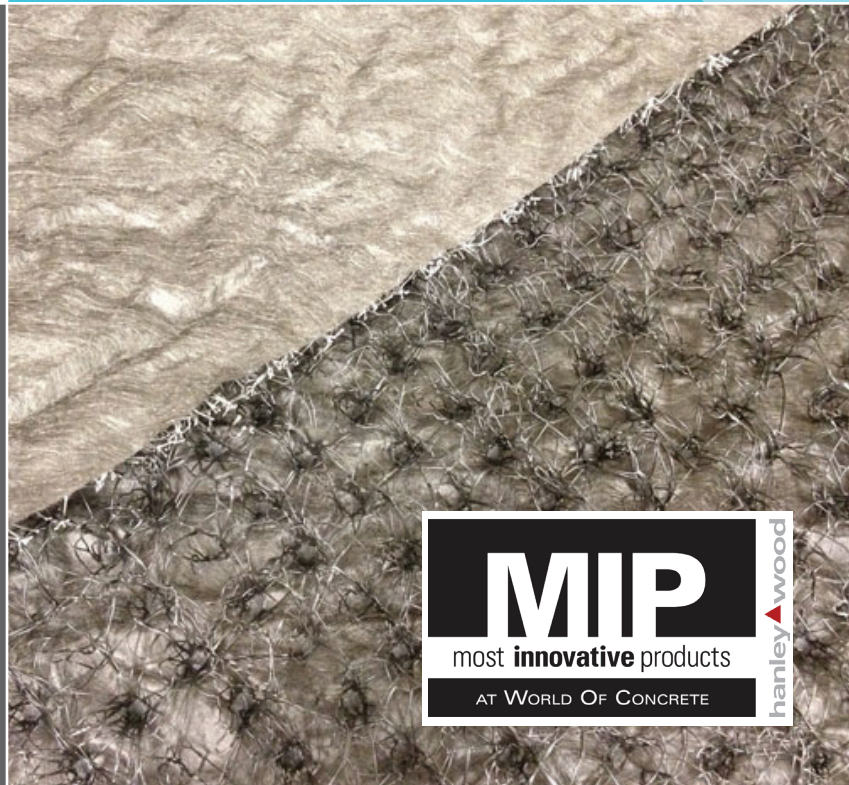
✓ Full wall drainage mat for brick and stone walls

## Benefits

- ✓ Creates a 96.5% void space in a masonry veneer cavity
- ✓ Unobstructed ventilation from top of wall to bottom weeps
- ✓ Lightweight pieces
- ✓ Filter cloth laminated to the front prevents all mortar from entering the cavity
- ✓ Springy design adjusts to varying cavity width
- ✓ Filter cloth and springy design also allow mason to maneuver brick property without skin abrasion



Photo:  
Close up view of the  
CAV-AIR-ATOR 1.0"



## CAV-AIR-ATOR



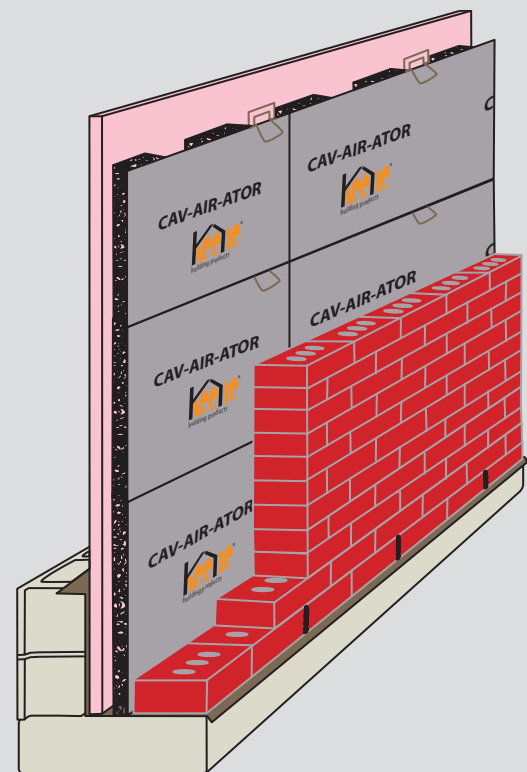
Product	Thickness	Length	Dimension Per Piece	Total Weight
CAV-AIR-ATOR 0.40	0.40 in./10 mm	4 ft	4 ft x 0.40 in. x 16 in.	6.0 oz/yd <sup>2</sup> / 142 g/m <sup>2</sup>
CAV-AIR-ATOR 0.75	0.75 in./19 mm	4 ft	4 ft x 0.75 in. x 16 in.	7.0 oz/yd <sup>2</sup> / 166 g/m <sup>2</sup>
CAV-AIR-ATOR 1.0	1.0 in./25.4 mm	4 ft	4 ft x 1.0 in. x 16 in.	8.0 oz/yd <sup>2</sup> / 271 g/m <sup>2</sup>
CAV-AIR-ATOR 1.75	1.75 in./44 mm	4 ft	4 ft x 1.75 in. x 16 in.	10.0 oz/yd <sup>2</sup> / 339 g/m <sup>2</sup>

Also available in 24" height

For a complete list of all our products, please contact KBP, or visit our website at [KeeneBuilding.com](http://KeeneBuilding.com)

### Applications

- ✓ Brick
- ✓ Stone
- ✓ Schools, public works and institutional construction
- ✓ Residential applications for long-life construction
- ✓ For applications in which the useful life of the building is in excess of 50 years



877 | 514 | 5336  
 Info@KeeneBuilding.com P 440 | 605 | 1020  
 KeeneBuilding.com F 440 | 605 | 1120